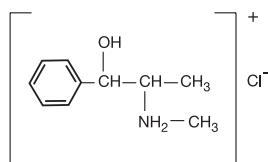

Technical Information

January 2004

(+)-Pseudoephedrine Hydrochloride

® = Registered trademark of
BASF Aktiengesellschaft

Applications:	Pharmaceuticals
Molecular formula:	C ₁₀ H ₁₅ NO · HCl
Molar mass:	201.69 g/mol
Chemical name:	(1S,2S)-2-Methylamino-1-phenyl-1-propanol hydrochloride
Description:	White, crystalline powder, practically odourless, with a bitter taste
Solubility:	Water: very freely soluble Ethanol: freely soluble Ether: practically insoluble
Loss on drying:	Not more than 0.5 percent (3 h, 105° C)
Melting range:	183 to 186° C
Content:	99.0 to 100.5 percent, in terms of dried substance
Item no.:	See Pseudoephedrine Qualities
Trade name:	(+)-Pseudoephedrine-HCl
CAS no.:	[345-78-8]
Container size:	Fiber drum 25 kg, 50 kg Contents in inside double bag Inner liner: polyethylene bag with Hostaphan® coating Outer liner: polyethylene bag
HS Code:	2939 42 00
Quality standard:	(+)-Pseudoephedrine-HCl meets the requirements of the latest editions of the following pharmacopoeias: USP, BP
Storage:	Keep in a tightly sealed container and protect from moisture and light Material Safety Data Sheet (MSDS) is available on request



(+)-Pseudoephedrine-HCl Qualities

Product No.	Description
30058036	(+)-Pseudoephedrine-HCl, fine powder
30058039	(+)-Pseudoephedrine-HCl, powder 200
30057300	(+)-Pseudoephedrine-HCl, coarse powder
30058038	(+)-Pseudoephedrine-HCl, cryst.
30058037	(+)-Pseudoephedrine-HCl, cryst. 60/140

“The information contained herein is believed to be correct and corresponds to the latest state of scientific and technical knowledge. However, no warranty is made, either express or implied, regarding its accuracy or the results to be obtained from the use of such information. No statement is intended or should be construed as a recommendation to infringe any existing patent.”